


## 'ISES' Range of Hazardous Area EEx'e' Certified Immersion Heaters

The 'ISES' electric heater comprises a large range of process immersion heaters, certified for use in a Zone 1 or Class 1, Div 2 Hazardous Areas, custom-built to meet client specifications.

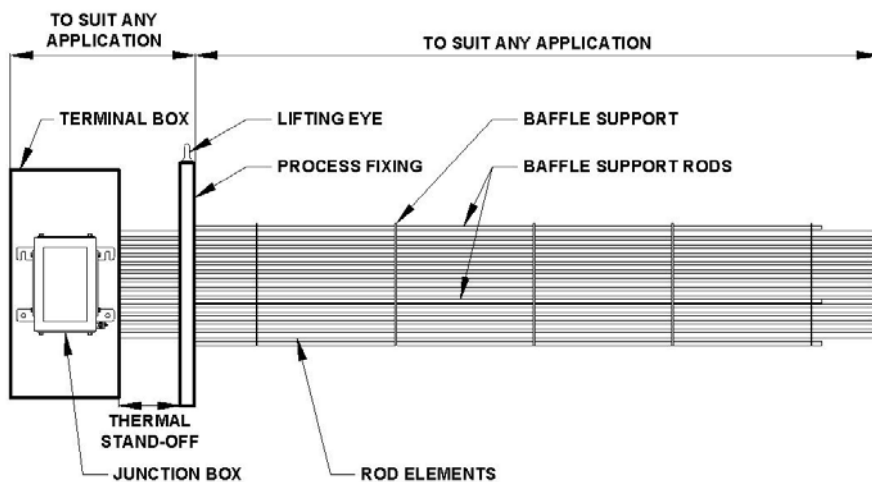
### FEATURES

- Up to 5000kW.
- ATEX approved  11 2 G.
- Certified EEx'e', Zone 1, Gas Group II.
- Certified Class 1, Div 2, Gas Group A, B, C, D.
- CENELEC, Standards Australia, CSA.
- Terminal box is certified weatherproof to IP67 or NEMA 4X.
- Anti-condensation heaters fitted, if required.
- Elements are specially sealed to prevent moisture ingress.
- Elements are individually replaceable on site without the need for special tools.
- Withdrawable type elements are available to facilitate replacement without draining the vessel.
- Lightweight Stainless Steel construction terminal box.
- Suitable and certified for use in ambient temperatures of  $-60^{\circ}\text{C}$  to  $+60^{\circ}\text{C}$ .
- Temperature classifications T1-T6.

### TYPICAL APPLICATIONS

- Butane/Propane vaporisers
- Crude Oil
- Glycol (TEG & MEG) Reboilers
- Molecular Sieve Regeneration
- Synthetic Oils
- Fuel Oils
- Fresh Water
- Sea Water
- Heating Medium
- Tank Heating
- KO Drums





Nominal Flange Size		kW LOAD with maximum immersed length of 3665mm			
6	150	30	80	200	
8	200	60	160	400	
10	250	100	260	650	
12	300	150	380	950	
14	350	180	460	1150	
16	400	245	620	1550	
18	450	325	800	2000	
20	500	400	980	2500	
24	600	585	1460	3650	
30	750	1110	2780	5000	
36	900	1610	4040	n/a	
40	1000	1995	5000	n/a	